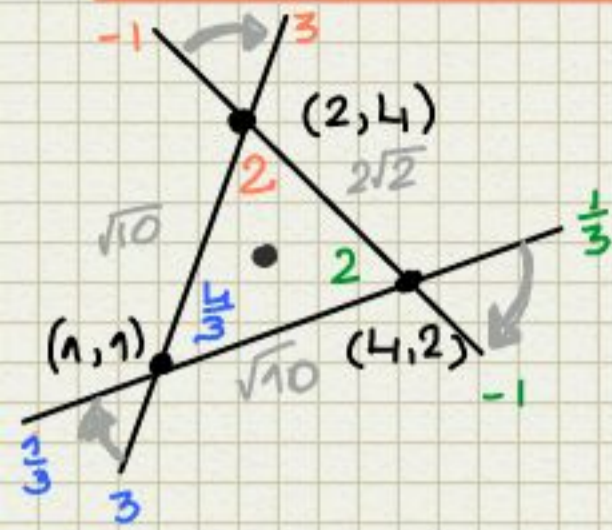


# Aula 01/03/2016



$$-1-3 / 1-3 = 2$$

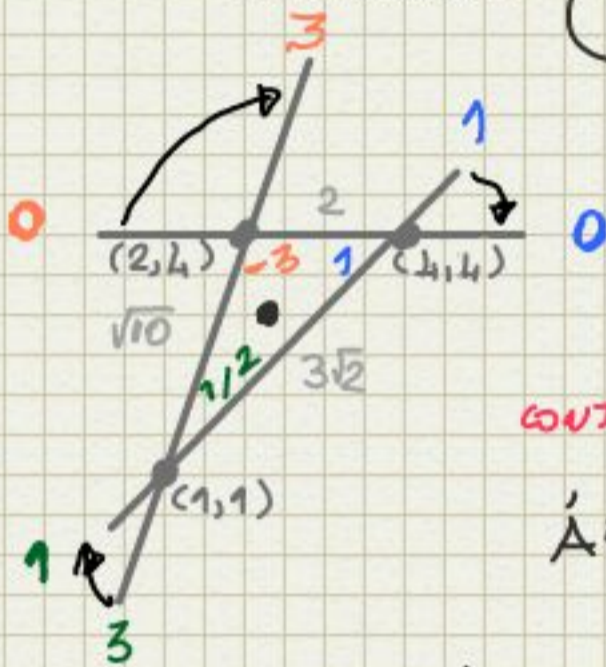
$$\frac{1}{3} - (-1) / 1 - \frac{1}{3} = \frac{4}{3} / \frac{2}{3} = 2$$

$$3 - \frac{1}{3} / 1 + 3\frac{1}{3} = \frac{8}{3} / 2 = \frac{4}{3}$$

CONTROLE!  $\frac{4}{3} + 2 + 2 = \frac{4}{3} \cdot 2 \cdot 2$  ✓

ÁREA  $\frac{1}{2} \begin{vmatrix} 1 & 3 \\ 3 & 1 \end{vmatrix} = \frac{|1-9|}{2} = 4$

CENTRÓIDE  $\left( \frac{1+2+4}{3}, \frac{1+4+2}{3} \right) = \left( \frac{7}{3}, \frac{7}{3} \right)$



$$(0-3) / 1+0 = -3$$

$$(1-0) / 1+0 = 1$$

$$(3-1) / 1+3 = 1/2$$

CONTROLE!  $-3 + 1 + \frac{1}{2} = -3 \cdot 1 \cdot \frac{1}{2}$  ✓

ÁREA  $\frac{1}{2} \begin{vmatrix} 1 & 3 \\ 3 & 3 \end{vmatrix} = \frac{|1-6|}{2} = 3$

CENTRÓIDE  $\frac{[(1,1) + (4,2) + (4,4)]}{3}$   
 $\left( 3, \frac{7}{3} \right)$

TAREFA: CALCULAR LADOS, ÂNGULOS, CENTRÓIDE, ÁREA

- 1) (0,1) (2,2) (3,0)
- 2) (-1,-1) (2,4) (3,1)
- 3) (1,2) (3,-1) (4,4)
- 4) (0,0) (3,3) (5,1)
- 5) (-1,1) (0,3) (2,2)

+ 5 EXERCÍCIOS COM PONTOS ESCOLHIDOS LIVREMENTE!

ENTREGAR NA PRÓXIMA AULA !!!