

Sheet2

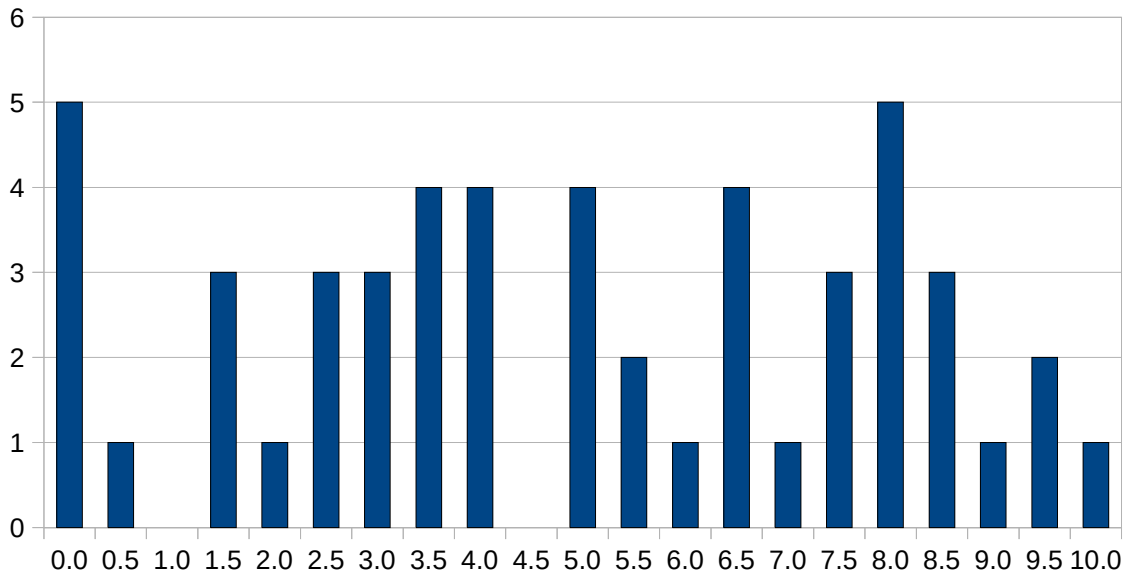
RA	P1	P2	P3	NA	E	Final
25153	6.2	4.0	7.7	6.1		
146473	8.3	5.4	7.7	7.2		
151041	1.8	#N/A	#N/A	#VALUE!		
151095	2.9	#N/A	#N/A	#VALUE!		
158176	2.2	1.1	0.0	1.0		
160494	#N/A	#N/A	#N/A	#VALUE!		
165880	7.8	8.2	7.3	7.7		
168523	1.1	0.6	#N/A	#VALUE!		
169405	8.7	1.0	#N/A	#VALUE!		
171036	5.3	6.5	7.7	6.6		
171345	7.1	2.9	5.6	5.2		
174682	0.5	#N/A	#N/A	#VALUE!		
177077	4.6	0.9	0.0	1.7		
177790	0.0	0.0	#N/A	#VALUE!		
182289	0.0	#N/A	#N/A	#VALUE!		
182497	4.0	1.3	2.2	2.5	1.4	1.8
184648	#N/A	#N/A	#N/A	#VALUE!		
184972	9.9	5.4	8.5	8.0		
185925	4.0	1.1	1.0	1.9		
187070	1.4	#N/A	#N/A	#VALUE!		
188275	2.4	0.5	0.0	0.9		
193325	7.1	2.0	9.7	6.6		
193627	7.0	5.2	9.6	7.5		
194335	0.0	0.0	#N/A	#VALUE!		
195036	3.4	4.1	5.3	4.4	3.5	3.8
195080	3.8	1.1	2.7	2.6	2.5	2.5
195396	3.2	2.4	5.3	3.8	0.8	1.8
196247	0.0	#N/A	#N/A	#VALUE!		
196492	3.6	2.8	6.5	4.5	3.5	3.8
196631	5.7	2.4	6.5	5.0		
196669	3.2	1.3	0.6	1.6		
197244	2.4	2.7	6.0	3.9	6.0	5.3
197460	9.3	7.7	10.0	9.1		
197477	6.4	7.1	5.6	6.3		
197569	2.9	3.2	5.8	4.2	3.7	3.9
197743	7.6	2.2	3.9	4.5	6.1	5.6
198081	9.1	6.1	9.1	8.2		
198439	3.4	2.4	8.1	5.0		
199428	0.0	0.5	0.0	0.2		
199628	7.9	1.8	9.7	6.8		
199650	6.3	2.3	8.5	6.0		
199813	4.6	2.2	8.0	5.2		
199921	7.7	1.1	8.3	6.0		
199944	8.0	5.8	9.5	7.9		
200499	5.2	3.2	8.0	5.7		
201567	2.9	1.0	0.5	1.4		
202654	#N/A	2.7	#N/A	#VALUE!		
203521	#N/A	#N/A	#N/A	#VALUE!		
204913	6.5	5.4	4.8	5.5		
205720	1.4	3.4	6.0	3.8		
206031	4.8	0.7	2.5	2.7	1.8	2.1
206261	8.3	3.2	9.1	7.1		

Sheet2

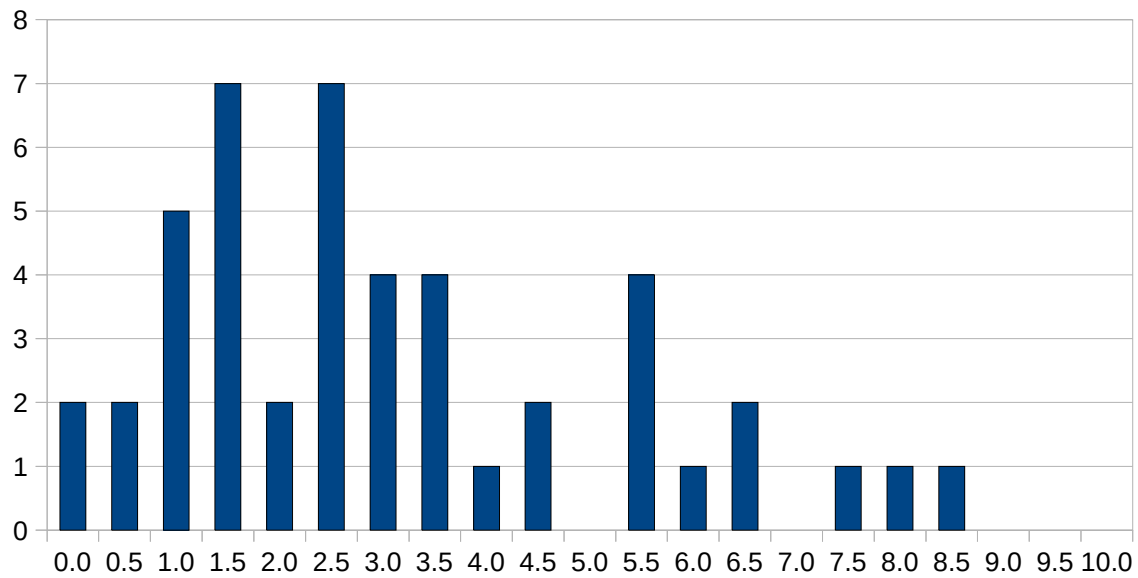
206480	8.4	1.5	6.2	5.5
207251	4.8	4.4	7.4	5.7
207260	7.1	2.3	5.5	5.0
820410	#N/A	#N/A	#N/A	#VALUE!

**MEDIA                    4.71                    2.89                    5.77                    4.6**

P1



P2



P3

